

The Organization

CPI Antony Rowe Ltd.

Bumpers Farm, Bumpers Farm Industrial Estate,
Chippenham, Wiltshire, SN14 6LH, UK

has been assessed and certified as meeting the requirements of



FSC® Chain-of-Custody

The company was assessed against the following standards:

- FSC-STD-40-003 V2-1 Chain of Custody Certification of Multiple Sites – November 2014
- FSC-STD-40-004 Version 3.0 FSC Standard for Chain of Custody Certification – April 2017
- FSC-STD-50-001 Requirements for use of the FSC trademarks by Certificate Holders

for the products detailed in the scope below

This certificate is valid from 18 June 2018 until 05 December 2021
and remains valid subject to satisfactory surveillance audits.

Recertification audit due before 06 December 2021

Issue 9. Certified since December 2006

SGS Ref # GB09/77478

This is a multi site certification scheme
Additional site details are listed on the subsequent page

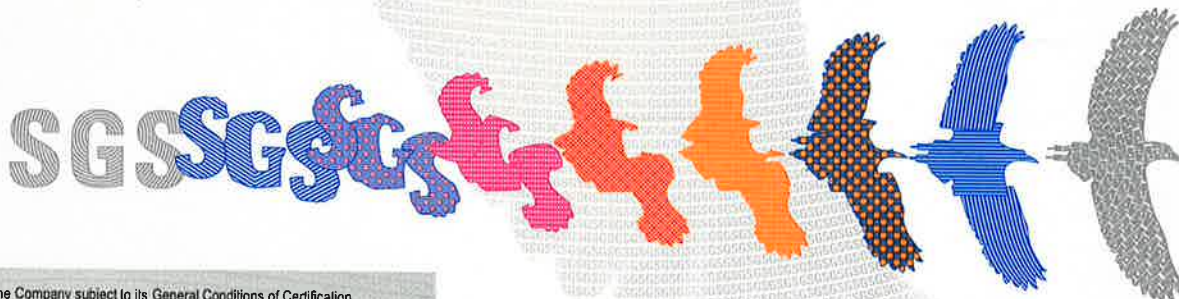
Authorised by

SGS Société Générale de Surveillance SA Certification and Business Enhancement
Technoparkstrasse 1 8005 Zurich Switzerland
t +41 (0)44 445-16-80 f +41 (0)44 445-16-88 www.sgs.com



The mark of
responsible forestry

The validity of this certificate shall be verified on <http://info.fsc.org/>
For the full list of product groups covered by the certificate see <http://info.fsc.org/>
This certificate itself does not constitute evidence that a particular product supplied by the certificate holder is FSC-certified [or FSC Controlled Wood].
Products offered, shipped or sold by the certificate holder can only be considered covered by the scope of this certificate when the required FSC claim
is clearly stated on sales and delivery documents. This certificate remains the property of SGS.
The certificate and all copies or reproductions shall be returned or destroyed if requested by SGS.



Certificate SGSCH-COC-002953, continued

SGS

CPI Antony Rowe Ltd.

Chain-of-Custody



Issue 9

Detailed scope

The purchase of FSC Mix and FSC Recycled paper and paperboard for the conversion to, and sale of, FSC Mix and FSC Recycled printed products (Transfer System), including outsourcing of print finishing.

Additional facilities

48-50 Birch Close, Eastbourne, East Sussex, BN23 6PE, UK



The mark of
responsible forestry

This document is issued by the Company subject to its General Conditions of Certification Services accessible at www.sgs.com/terms_and_conditions.htm. Attention is drawn to the limitations of liability, indemnification and jurisdictional issues established therein. The authenticity of this document may be verified at <http://www.sgs.com/en/certified-clients-and-products/certified-client-directory>. Any unauthorized alteration, forgery or falsification of the content or appearance of this document is unlawful and offenders may be prosecuted to the fullest extent of the law.

Page 2 of 2